

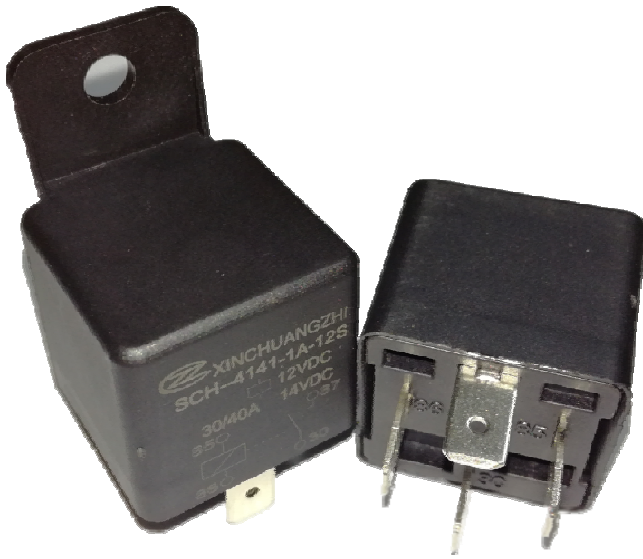


Relay

ISO9001、ISO14001 Certification Enterprises

Main Feature

1. Small size (28.3x28.3x25.8 in mm) produces a switching capacity up to 40A for high density P.C.Board mounting technique and quick Connect Terminal .
2. The contact form construction is 1A/1B/1C
3. The Surge Resistance of 4141 series is 10,000V
4. Sealing Construction (Free from dust and solder flux): SCH-4141: Plastic duct cover.
5. The selection of plastic insulation material is designed for high temperature and provides better chemical solution performance.
6. RoHS Compliant.



Application

Air Conditioning, Fridge, Washing Machine, etc Household Appliances

Contact Rating

- Nominal Load(Resistive Load $\cos \phi = 1$)
Contact Capacity
SCH-4141-1C..... 30A at 14VDC
SCH-4141-1A/1B..... 40A at 14VDC
- Max. Allowable Current
SCH-4141-1C..... 30A
SCH-4141-1A/1B..... 40A
- Max. Allowable Voltage
SCH-4141-1A/1B/1C..... DC14V
- Max. Allowable Power Force
SCH-4141-1C..... 420W
SCH-4141-1A/1B..... 560W
- Contact Material... Ag Alloy
- Contact Form SPDT&SPST

Performance (at Initial Value)

- Contact Resistance..... $\leq 100m\Omega$ at 6VDC/1A
- Operate Timems. Max
- Release Time.....ms. Max
- Dielectric Strength:
Between Coil & Contact..... 500VAC at 50/60 Hz
for one minute
Between Contacts..... 500VAC at 50/60 Hz
for one minute
- Surge Resistance.....10,000V (between Coil
& Contact 1.2x50 μ s)

- Insulation Resistance... 1,000 Mega Ω Min. at
500VDC
- Max. On/Off Switching:
Electrical.....30 Ops per minute
Mechanical..... 300 Ops per minute
- Temperature Range..... -35~125°C
- Humidity Range... 45~85% RH
- Coil Temperature Rise..... 35°C Maximum
- Vibration:
Endurance... 10 to 55 Hz dual
amplitude width 1.5mm
Error Operation... 10 to 55 Hz dual
amplitude width 1.5mm
- Shock:
Endurance... 981m/s² Min
Error Operation...98.1m/s² Min
- Life Expectancy:
Electrical... 10⁵ Operations at
Rated Resistive
load
Mechanical... 10⁷ Operations at
No load condition
- Weight.....about 36g

Safety Standard & Its File Number

Pending



Relay

ISO9001、ISO14001 Certification Enterprises

Coil Specification (at 20 °C)

Coil Sensitivity	Nominal Voltage (VDC)	Nominal Current (mA)	Coil Resistance ($\pm 8\%$)	Power Consumption (W)	Pull-In Voltage (VDC)	Drop-Out Voltage (VDC)	Maximum Allowable Voltage (VDC)
SCH-4141	5	119	16	Abt. 1.6	75% Maximum	10% Minimum	130%
	6	100	23				
	9	66.7	51				
	12	50	90				
	24	25	360				
	48	12.5	1440				

Ordering Information

SCH - 4141 - 1C - 12 - M - P - S

Seal type: S

Receptacle type : Null: PCB type p: Insertion type

Coil Type: Blan:1.6W Standard DC Coil
Version type : Null: NO Bracket M: Plastic Bracket T: Metal Bracket

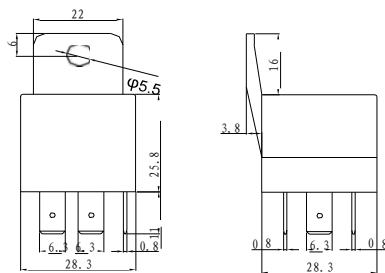
Coil Voltage: ,5:5V,6:6V,9:9V12:12V,24:24V ,48:48V

Number of Pole: 1A:One Group NO, 1B:One Group NC,1C:One Group NC/NO

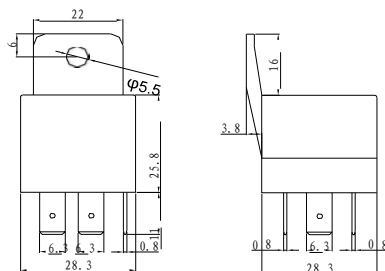
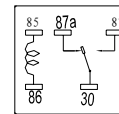
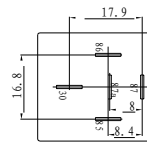
Model:4141

Generic Terms: SCH

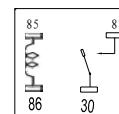
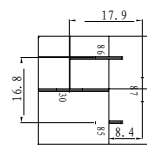
Dimension



1C



1A



Dimension Tolerance: <math>< 1\text{mm}</math>: $\pm 0.2\text{mm}</math>
>5mm: $\pm 0.5\text{mm}</math>$$